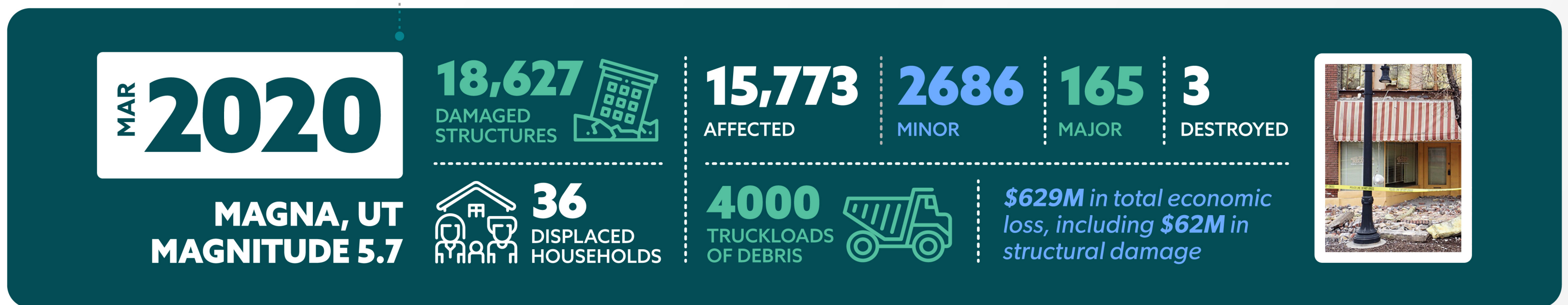
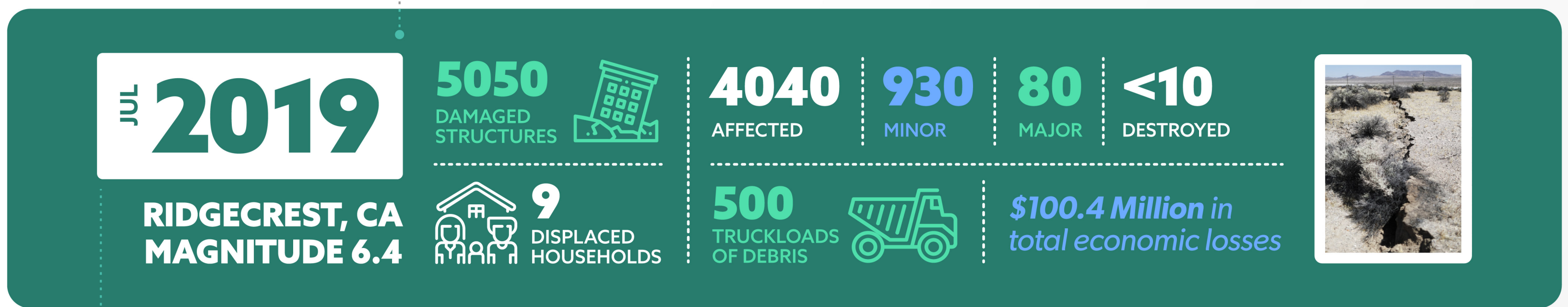
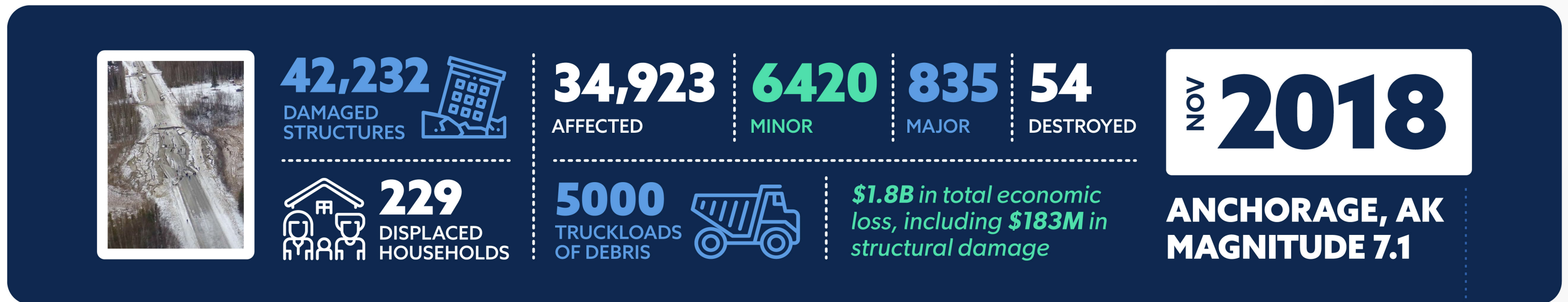


Disaster Impact Modeling for Response Agencies

Niyam's Risk Analytics team collaborates with FEMA to provide authoritative impact estimates for major U.S. disasters using FEMA's Hazus loss modeling tools. Modeled impacts include building damages, shelter requirements, economic losses, and debris totals - information that helps decision makers allocate response resources and prepare for recovery activities.



As post-disaster damage assessments become increasingly challenging in the face of the global COVID-19 pandemic, Niyam's virtual impact modeling has offered a safe and accurate alternative for information gathering in the chaotic days following a disaster. For more information about our Risk Modeling capabilities, contact us at risk@niyamit.com.